

MODEL MCC 4X15

# CONSTANT CURRENT WALL MOUNT 4 CHARGER

The MCC 4X15 is four chargers in one. Built to be wall-mounted above a charging table or bench without the need for a separate charge bar.

Computer controlled electronics provide constant current charging at 15 amps to minimize charging time. Each charger is served by separate, automatic micro-processor controls which (a) regulate current and voltage, (b) provide time control, and (c) automatically sense full state of charge for shut-off.

Charging control is based on constant 15 amps until the battery voltage reaches 16 volts, or full charge, and then a finishing charge at a constant 16 volts for one hour. Minimum charging time is 1 1/2 hours; maximum is 4 hours.

Internal microprocessor diagnostics detect batteries with shorted cells to avoid unsafe charging and wasted customer time.

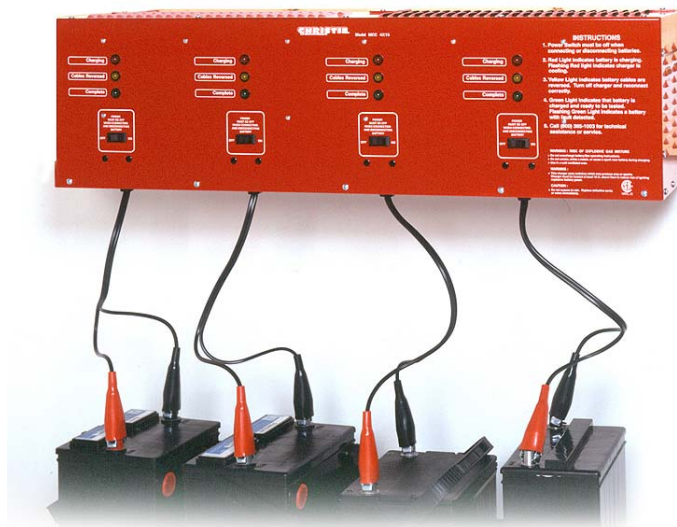
- **Better Than Parallel**

Traditionally, parallel chargers have been widely used for "back room" charging installations. In many cases, for business reasons, the parallel chargers are not used properly; ie, as "batch" chargers with all batteries starting and finishing together at the same time.

The MCC 4X15 allows batteries to be added or taken off charging as needed with no effect on the other batteries being independently charged.

- **Safety Features**

Each of the four charging units is protected by Reverse Polarity controls for safer service. Shorted cells are detected to avoid excessive heat during charging of defective batteries.



### Electrical Specs:

#### AC Input Power:

120 Volts AC  
20 amps AC  
60 HZ

#### DC Output Power:

12 Volts DC (Nominal)  
17.0 Volts DC (Max)  
15 Amps DC (Max)  
(Constant Current Control)

### CSA/URTL Certified

### Dimensions:

Height 10 in.  
Depth 12 in.  
Width 36 in.  
Weight 75 lbs.  
(mounts 22 in. above  
charging table)

### Warranty:

1 year parts & labor

© Copyright Christie Automotive

**CHRISTIE.**  
AUTOMOTIVE PRODUCTS

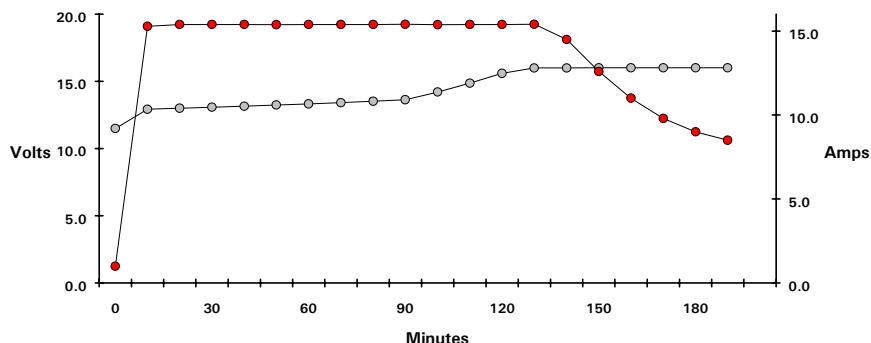
PROFESSIONAL DUTY BATTERY SERVICE EQUIPMENT

2851 McGaw Avenue, Irvine, CA 92614  
800.365.1003 FAX 949.553.2003  
www.ChristieAutomotive.com

CHRISTIE.  
AUTOMOTIVE PRODUCTS

BATTERY SERVICE EQUIPMENT

### SAMPLE MCC 4X15 CHARGING CURVES

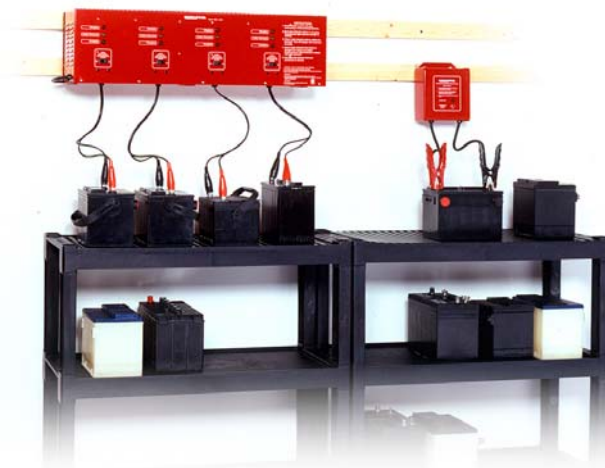


#### CONTROLS: Criteria/Specifications

- Time: Bring battery to full charge as quickly as possible, independent of other batteries.
- Fail Safe Safety: No Sparks permitted during hook-up; automatic reverse polarity protection.
- Operations Simplicity: Very simple to use without special training of operators.
- "Automatic" Controls: Minimum of intervention and supervision by operator after hook-up and power turn-on except to check for overheating batteries and completed charge light.
- Electrical Stability: Charging voltage is independent of voltage variations in the AC power line.
- Maintenance: Equipment is "modular" to permit "exchange" service or replacement.

#### OPERATIONS:

1. Constant Current Stage:  
Current is regulated at 15 amps and voltage (max) is 17 volts. Time is 30 min.
2. Voltage Monitoring Stage:  
Current is regulated as above until:
  - a. Charging voltage reaches 16 volts, or
  - b.  $dV/dT$  equals zero (flat slope)
 Max time is 2 1/2 hours
3. Finishing Stage: One hour at 16 volts; Constant voltage



SHOWN WITH BCT 40 CHARGING TABLES AND DC 200 PRE-TEST DISCHARGER

#### ACCESSORIES:

##### Battery Charging Table BCT 40

Made of acid proof, high density poly plastic material. Shelves are flanged (dripleless) with "wash board" liner to keep batteries up and out of acid. Dimensions: Shelves (18 in. deep x 36 in. wide), Height (37 in.). Two Storage Shelves at 20 in. high and at base

##### Pre-Test Battery Discharger DC 200

Apply a 200 amp fixed load after charging to remove surface charge prior to testing. Automatically shuts off load after 8 seconds. With wall mounting bracket.