

MODEL C 10612

10 AMP MULTIPLE BATTERY CHARGER FOR SMALL BATTERIES

Designed for small lead-acid and gel cell batteries, the C10612 will charge ten batteries simultaneously at 6 or 12 volts. Equally effective in charging a single battery. Easy to use with no controls to adjust, simply connect batteries to charger and turn it on.

- **Safe...Automatic Current Regulation**

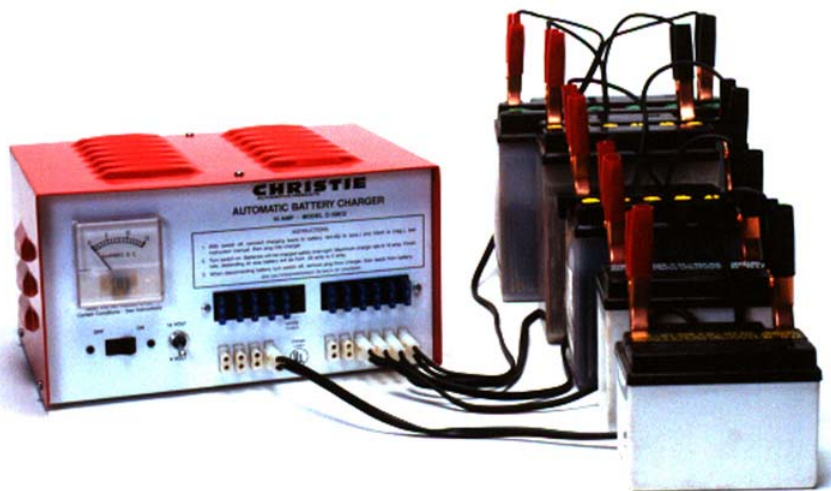
Throughout the charging cycle, each circuit automatically regulates to a safe current for the particular battery being charged, regardless of state of charge or size. Finish charging rate will taper as low as 50 milliamperes (50 thousandths of an amp). Excessive gassing and overheating is minimized even if batteries are left on charge for several days.

- **Solid State Circuitry**

No moving parts. Transformer: Isolation type...Ferroresonant design provides the precise automatic current regulation. Rectifiers: Long life silicon diodes.

- **Circuit Protection**

All ten charging circuits are individually fused, a complete protection to both the batteries and the charger. Fuses are conveniently located on front panel for easy access.



©Copyright Christie Automotive

Electrical Spec:

AC Input Power:

120 Volts AC
2 amps AC
60Hz

DC Output Power:

6/12 Volts DC
10 amp DC

Dimensions:

Height 6 in.
Depth 7.5 in.
Width 11 in.

Shipping Weight:

19 lbs.

Warranty:

1 year parts & labor

CHRISTIE.
AUTOMOTIVE PRODUCTS

BATTERY SERVICE EQUIPMENT

CHRISTIE.
AUTOMOTIVE PRODUCTS

PROFESSIONAL DUTY BATTERY SERVICE EQUIPMENT

2851 McGaw Avenue, Irvine, CA 92614
800.365.1003 FAX 949.553.2003
www.ChristieAutomotive.com